



Update from the Medical Director

BreastScreen WA staff showed their resilience, and agility with the exceptional way they were able to commence screening after the April COVID closures. Carolyn Madeley (Chief Medical Imaging Technologist) has provided an amusing account of the trials and tribulations of getting 4 mobiles back on the road.

The women of Western Australia have shown such confidence in our services that July was our busiest screening and online bookings month ever.

It was particularly gratifying to have BreastScreen WA nominated for a North Metropolitan Health Service, Going the Extra Mile GEM award. BreastScreen WA, particularly with Carolyn Madeley's leadership has worked so hard to truly commit to excellence in customer services and it is lovely to see this commitment acknowledged by this nomination and the award of honorable mention.

We need to stay well and free from winter coughs and colds to maintain the momentum to continue screening record numbers of women to meet burgeoning demand from our screening participants.

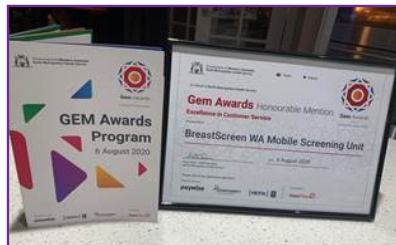
Dr Liz Wylie

GEM Awards

Congratulations to all of the teams on the mobiles and the mobile relief staff who came runners up in the category of "Excellence in Customer Service" at the NMHS GEM Awards presented on the 7 August 2020. You should all be very proud of yourselves. The team was represented by Kath and Vikki at the awards ceremony.



Kath Knight and Vikki Rosagro



Message from Carolyn Madeley, Chief MIT
"I would like to add my personal thanks to you all for the work you do in sometimes extremely trying conditions. You really deserve this recognition. Well done."

Multicultural resource update

Sonya Schultz, Program Officer has been busy updating the language resources. The following 7 resources have been updated and are now available in 32 languages on the BSWA website.

- Breast screening information
- Screening mammography for women with a family history of breast cancer
- Notes on screening mammography
- After your screening mammogram
- Information on further tests
- After 75 information
- 1 in 7 poster



The process has been streamlined in the clinics so that the information is downloaded and printed as a fact sheet when the client presents, meaning the client is always receiving the most up to date information.

New BreastScreen WA Nurse Counsellors

Beth Lawrence



I have been Nursing for 43 years and have a strong background in women's health having been a Midwife for 16 years, and a Specialist Breast Care Nurse at Fiona Stanley Hospital for the past five years.

This is an exciting change of direction in Breast Care Nursing for me as I was previously caring for women following a breast cancer diagnosis. I have seen first hand the value of BreastScreen and how early recognition of breast cancer can make a difference to the management and treatment required by patients.

In my spare time I love attending yoga classes, walking, and I am a whizz at cooking sweet treats. I also care for my grandchildren in my spare time for my daughters, one of whom is also a nurse and studying."

Marie Nash

"I have been a Nurse for over 30 years, most recently at Fiona Stanley Breast Assessment Unit. I have lived in the USA, Australia and Ireland and I am married with two daughters with unpronounceable Irish names!"



New Administrative Support Officer

Heather Atkinson

BSWA welcomes Heather Atkinson to the role of Administrative Support Officer, Screening Services in Geraldton. "I am extremely excited to be a part of the BreastScreen WA team and I am looking forward to broadening my skills and knowledge" Her hobbies include gardening and dirt bike riding on weekends.



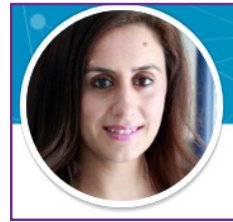
Screening milestones achieved in July

BSWA screened a record breaking 12,870 Western Australian women in July, an average of 560 per day. This is the highest number of mammograms recorded in a single month over the last 10 years and is a 17 per cent increase on the same time last year. July also marked an online booking record, with 8,036 screening appointments made via the BSWA website



BSWA welcomes two new Radiologists

Dr Bann Saffar



Bann conducted her radiology training in WA and was awarded the FRANZCR in 2015. She undertook Breast-Imaging Fellowship in Royal Perth Hospital then did a one-year Thoracic Fellowship at The Ottawa Hospital, Canada. Currently, she also works as a diagnostic and interventional radiologist at Fiona Stanley Hospital. She has an interest in research and she likes to spend her free time with her family.

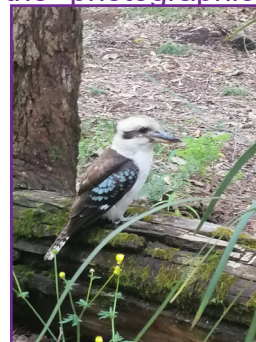
Dr Rachael Manning

"I trained as a Radiologist at Guy's and St Thomas Hospital qualifying in 2017. Subsequently travelling to Perth to complete a women's imaging fellowship at Royal Perth hospital and a 6 month Body Imaging Fellowship at Fiona Stanley Hospital, during which time I gained FRANZCR qualification. I currently work as a Radiologist at SKG Radiology in Perth. I commenced my role at BSWA August 2020, providing Radiologist input at the Bunbury assessment clinic. I look forward to contributing to the care of Western Australian women through BSWA."

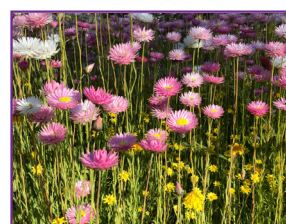


Staff photography showcase

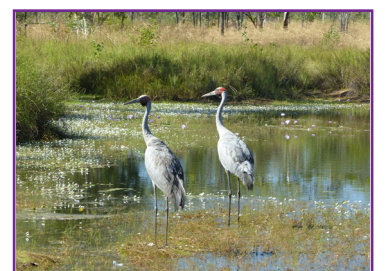
The talent of BSWA staff members who entered the photographic competition in March will be showcased through a collection of images in each newsletter for the remainder of 2020. The photographs below reflect the Djilba season as the time to start looking for the yellow and cream flowers that appear en masse.



Dwelllingup Kookaburra
Lynne Finlay



Everlasting Flowers, King Park
Eric Khong



Gibb River
Kate Stevenson

Getting the mobiles back on the road

Life on the mobiles is never dull, but thanks to the great team of women staffing our mobile fleet our screening service never falters. Here are a few of the more amusing challenges our staff have encountered since the mobiles have been back on the road.

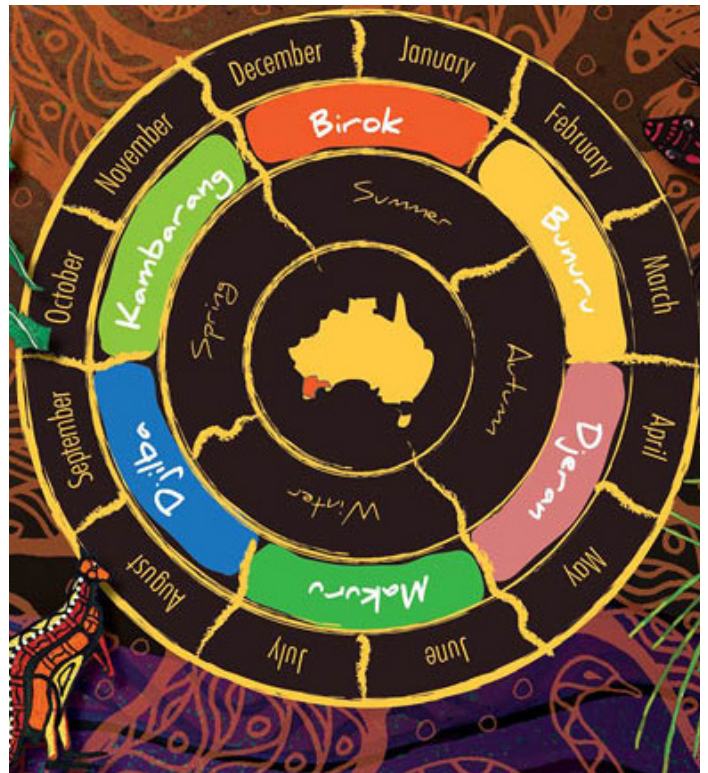
Although it seemed a good idea at the time, do not try to relocate all four mobiles from Perth on the same day! That said, even with the lack of flights, all the staff managed to get themselves to the right Trailer in the allocated time. The same cannot be said for the change room curtains however. Trailer three, in Carnarvon, ended up with two sets of curtains, while Trailer one, in Esperance, made a quick trip to the shops to buy shower curtains as a stop gap. Both Trailer three and the Truck ended up with flat batteries on the automatic doors, which we also discovered picked up the reflective tape marking out the social distancing requirements. One of the radiographers gave herself a fright, and a big clean up job, when she accidentally set off a fire extinguisher stored in a kitchen cabinet. Finally Trailer two had an issue with the power tripping out, but only if they switched on the lights. Luckily radiographers are used to working in the dark, and only one lady asked to be rebooked. We are very fortunate to have flexible and innovative staff on the mobiles.



Leaving Jerramungup

BSWA staff -Kathy Ashby, Kath Knight (back) and Rachel Pilgrim

Djilba - season of conception



Source: Kings Park Education, Kings Park and Botanic Garden
Artwork: Dr Richard Walley

First spring: August-September

Transitional time of year, Flowers starting

Djilba season is a time to look for the yellow and cream flowers starting en mass. Djilba is a transitional time of the year, with some very cold and clear days combining with warmer, rainy and windy days mixing with the occasional sunny day or two.

This is the start of the massive flowering explosion that happens in the South West. This starts with the yellow flowering plants such as the Acacias. Also colours that are around at this time of year are creams, combined with some vivid and striking blues.

Traditionally, the main food sources included many of the land based grazing animals as in the season before. These included the Yongar (kangaroo), the Waitj (emu) and the Koomal (possum).

The woodland birds will still be nest bound, hence the swooping protective behavior of the Koolbardi (Magpie) starts to ramp up and if watched closely, so to do the Djidi Djidi (Willy Wag Tails) and the Chuck-a-luck (Wattle Birds) to name a couple of others.

As the season progresses and the temperatures continue to rise, we'll start to see the flower stalks of the Balgas (Grass Trees) emerging in preparation for the coming Kambarang season.



BreastScreen WA presents Pink Ribbon Breakfast 2020



Monday 26 October 2020

Our guest speakers....



Professor Arlene Chan
Breast Cancer Oncologist
Hollywood Private
Hospital

Professor Arlene Chan is one of Australia's most respected Breast Cancer Oncologists. Arlene is a founding member and Vice-Chair of Breast Cancer Research Centre-WA, which was established in 2009 as a not-for-profit breast cancer research and education organisation. She is passionate about improving outcomes for those diagnosed with breast cancer and has a strong commitment to breast cancer research.

Awarded a Western Australia of Year Award in 2016 for her contribution in the field of science at a state, national, and international level and was a finalist for Australian of the Year in 2017. She was inducted into the WA Women Hall of Fame in 2017. In 2018, she was awarded a Member of the Order of Australia in the Queen's Honors List for her contribution to the field of breast cancer oncology.



Professor Cobie Rudd
Deputy Vice-Chancellor
and Vice-President
Edith Cowan University

Professor Cobie Rudd has key responsibilities to enhance external relations and higher education sector partnerships, to lead institutional accreditations in a number of areas of social responsibility such as gender equality and sustainability, and to oversee professional accreditations.

Professor Rudd has over 30 years of experience across all sectors, leading a diverse range of capacity-building and research projects on a national scale, and has served as a Non-Executive Director on over 13 boards of governance. She currently holds a Government of Western Australia Cabinet-endorsed appointment to the State Training Board and was appointed to the Board of the Cancer Council WA in May 2018.

Registration: From 7am
Event: 7:30 - 9am

Fraser's Function Centre
Fraser Avenue, Kings Park

\$40.00 including GST

RSVP by 19 October 2020

No table reservations

Register and pay online at
[EventBrite \(click below\)](https://www.eventbrite.com.au/e/breastscreen-wa-pink-ribbon-breakfast-2020-tickets-112073827836)

<https://www.eventbrite.com.au/e/breastscreen-wa-pink-ribbon-breakfast-2020-tickets-112073827836>

