

Update from the Medical Director

2020 has been a very hard year for everyone. I would like to congratulate the staff, in the wonderful way they have continued to provide genuine client centred care to our screening participants and their families. In March we had the precipitous closure of the service, and then the miraculous whole of service reopening at the end of April. 13,500 appointments were lost due to the COVID closure. Following the projected opening of the North Metropolitan assessment clinic in winter/spring 2021, it is hoped that screening numbers can be increased to capture many of this under screened group of women. Staff have been amazing in the care they have shown dealing with clients, who have been understandably upset about prolonged screening to assessment delays.

I hope everybody has a safe and really happy Christmas and New Year. Come back from the holiday season fresh and ready for the challenges that 2021 is bound to hurl at us.

Dr Liz Wylie



Christmas & New Year closure



Clinic closing dates

The BSWA mobile units finish screening on Friday 18 December 2020. The last screening day for fixed clinics is Wednesday 23 December 2020. All clinics re-open on Monday 4 January 2021.

Call centre hours

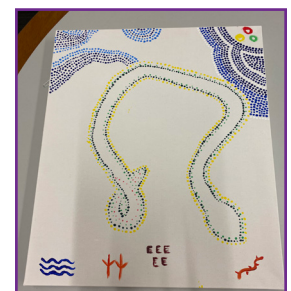
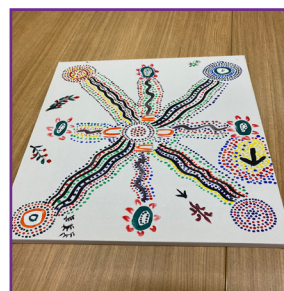
The call centre is only closed on the public holidays. The call centre is open for bookings with reduced hours on Thursday 24 December (8am to 4pm), then from 9am to 4pm Tuesday 29 – 31 December 2020. Back to usual operating hours 8am to 5pm from Monday 4 January 2021.

NAIDOC Week 2020

This year NAIDOC Week was celebrated from 8-15 November with the theme 'Always Was, Always Will Be' recognising that First Nations people have occupied and cared for this continent for over 65,000 years. Celebrations were scaled back across the community due to COVID restrictions however BSWA used the opportunity to launch new Aboriginal artwork t-shirts for clinic and head office staff. The shirts were shown off publicly at an event in Mirrabooka on 12 November with Health Promotion staff providing screening information to Aboriginal women, resulting in some first-time bookings. On Friday 13 November the service launched its newest clinic in East Perth which is the first BreastScreen clinic in Australia to be co-named with an Aboriginal designation (More on this to come). To conclude NAIDOC celebrations, staff at Eastpoint Plaza came together in their new shirts to enjoy a traditional afternoon tea with cakes and biscuits made from bush 'tucker' herbs and spices.



Eastpoint Plaza staff



Staff mindfulness artwork activity

East Perth - Mardalup Clinic Launch



On Friday 13 November 2020 BreastScreen WA launched its newest screening clinic at 63 Adelaide Terrace, officiated by the Honourable Alanna Therese Clohesy, MLC. East Perth - Mardalup Clinic is the first BreastScreen Clinic in Australia to be co-named with a traditional Aboriginal designation. Mardalup is the Noongar name for the location of the clinic and was selected in consultation with local Aboriginal Elders and the Western Australian Museum. The first clients were screened on Monday 7 December.



Kelly Cameron,
Health promotion



Dr. Jodi Graham
Hon. Alanna Therese Clohesy

GP Advisory Group New Member



BSWA State Coordination Unit would like to welcome Dr Richelle Douglas to the GP Advisory Group. Dr Richelle Douglas is currently the Medical Director of Derbarl Yerrigan Health Service

and is a Practitioner Member of the Medical Board of Western Australia. Richelle has worked in multiple settings around the world from Perth and rural Western Australia, through to remote areas of Lima in Peru, Ireland and London. She has worked as the Medical Director of Sexual Health Quarters, a General Practitioner and as a Senior Registrar in obstetric medicine.

Farewell to GP Advisory Group Member

BreastScreen WA thanks Dr Alison Stubbs for serving on the GP Advisory Group for the past 15 years. Alison has provided the perspective of a grass roots practising GP and provided valued advice on working effectively with primary care.



Staff Bio - Sarah Paton



Staff and clients of BSWA are fortunate to share the talent of Sarah Paton who has provided several original artworks for display across the service. Sarah Paton is a breast physician, a member of BSWA GP Advisory Group, part of the RPH Breast Clinic team, and likes to paint.

After studying science and medicine at UWA, Sarah did her residency at RPH, before further studies took her to Melbourne and Boston, working in general practice, paediatrics and postgraduate studies in dermatology. As a passionate advocate for women's health, screening programmes and the early detection of cancer, Sarah is an avid fundraiser for cancer and scientific discovery research. In particular The Harry Perkins Institute of Medical Research here in Perth. For nearly 10 years, she has participated in the Walk for Women's Cancer and the MACA cancer 200 – Ride for Research, plus Perth Running Festival, Mother's Day Classic and the odd mountain climb, accepting challenges, working and painting, to raise awareness, and to fund research. Sarah explains "growing up surrounded by art, doctors and robust discussions; artistic expression, medicine and dialogue have all been central to me." Several of Sarah's unique paintings can be seen in Eastpoint Plaza, Royal Perth Hospital and Bunbury Screening and Assessment Clinic and are frequently complimented on by visitors the service.



New Breast Series (in progress)

Sarah Paton - The artwork explained

Below Sarah explains the elements of the painting displayed at BSWA Head Office - "Picasso" Take on Breast Cancer. "As a breast doctor I deliver many breast Cancer diagnoses each week, and felt compelled to create an image that reflects the process, the intimacy, fear, grief, and also hope; the mammogram plate, breast lesion, radiation dot tattoo, loss of hair, wings of freedom. By using Picasso-like deconstruction, in vivid acrylics, the directly personal narrative could be stripped away to create a shared one."

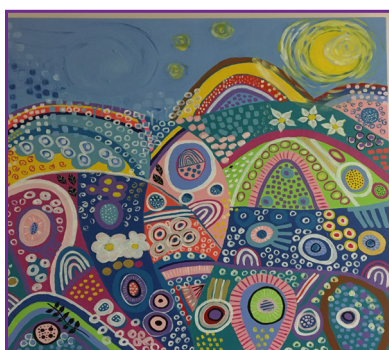


"Picasso" Take on Breast Cancer (on display at EPP)

Sarah explains that her other paintings on display at Royal Perth Hospital and Bunbury Clinic are also brightly coloured to represent spring and life, and a physical distraction to help reduce stress for women experiencing breast procedures in the clinic.



Bunbury Clinic

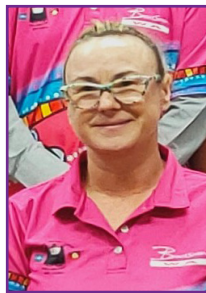


Royal Perth Hospital



Royal Perth Hospital

The Next 100 Steering Committee



BSWA is proud to announce that Julie Wilkes, Supervising MIT has been selected as one the staff Ambassadors for the WNHS 'Next 100 Team'. This Steering Committee will help in workshops, discussions and learning throughout the organisation to define behaviours that let us live our values of Care, Respect, Innovation, Teamwork and Integrity. They will be the staff and community voice from across WNHS and be setting the direction along with the Executive Committee. The goal of 'The Next 100' is to progress WNHS towards being a People First Culture, with the committee defining what a People First culture is. Thank you Julie for putting your hand up to help shape WNHS into the next 100 years!

Thank you and Farewell to Jan Pickering



After 8 years of excellent service, Jan Pickering, Coordinator Screening Services, is moving on to a new challenge. Jan recalls her early days with the service... "When I arrived at BSWA I was surrounded by files throughout the whole office and I had wondered what I had done in joining this team. I soon realised that this was normal for the time back then. Moving forward 8 years and we have become "paperlight" and very few files remain within our walls. I have seen some significant changes during my time here, and the processes we now follow are second to none. We have a great IT team who are leading us into the new world. I have thoroughly enjoyed working with my team and watching them develop over the years, although we have shrunk from 27 to 15 FTE during this time whilst still maintaining an incredibly high standard of service in the Call Centre, Admin and Image Preparation areas. Coordinating the downtime during COVID was a challenge we took head on and managed to cancel and rebook over 7,000 clients during the April period. I felt a real sense of achievement at that time. I wish the BSWA team all the very best moving into the future." We thank Jan for her years of service and wish her all the best in her future endeavours.