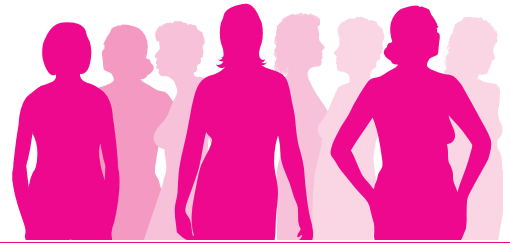




Department of Health



# Keeping abreast of BSWA News

Issue 15

January 2014

## Update from the Medical Director

Happy New Year. The beginning of the year is traditionally a time to regroup after the festive season, and plan for a challenging and rewarding year ahead. BreastScreen WA will have its share of challenges and rewards in the future months. Online booking has had a soft trial launch and over 50 women have successfully made bookings. The Minister of Health will formally launch the initiative on 4 February, World Cancer Day which will be followed by a more vigorous promotion of the facility to the public.

2014 will see the program extend the screening target age to women 70-74.

In 2014 the program will transition from hard copy reading to soft copy reading. These major work practice changes will bring their share of challenges, and rewards, so I hope everyone is feeling refreshed and energised for the exciting year ahead.

- Dr Liz Wylie

## Nurse Counsellors Study Day

The Breast Assessment Nurses held a study day on 20 December 2013 as part of the Nurses continuing professional development. Natalie Webb from SCGH gave us an update on Tomosynthesis.

BreastScreen service overviews were presented by Cynthia Leal, Jan Tresham, Janet Brook and Heather Boyle. The day was very enjoyable and all agreed it was a positive and productive day.



Nurse Counsellors (from left)... Sophie Choo, Margaret Abbott, Megan Green, Marion Plunkett-Wong, Janice Davies and Kate Stevenson

## Online Bookings Update



Online Bookings  
Click here

The trial of online booking continues with over 50 online bookings now confirmed and some 'tweaking' to consolidate the system. As from early February the letters to clients will also include their

own login and password details so it will be easier to use the system. Hon Dr Kim Hames will officially launch online booking on 4 February 2014 World Cancer Day at the Perth City Clinic.

## Staff Excellence Award



Heather Boyle from Screening Services was honoured with a Staff Excellence Award in December at the Women and Newborn Health Services Christmas lunch. Congratulations Heather.

## Pink Ribbon fundraising record



BreastScreen WA raised a record \$2563.80 from donation tins and merchandise in support of Cancer Council WA's Pink Ribbon Day 2013!

Thank you to everyone who assisted to promote the event. Your generous contribution is appreciated.

## Digital Breast Tomosynthesis Update



Mid-December saw Santa arrive a little early in the BSWA Assessment Centres with a GE Senographe Mammography Upgrade for Digital Breast Tomosynthesis (DBT).

This exciting advancement into the world of 3D mammography sees the further assessment machines able to take nine images, in

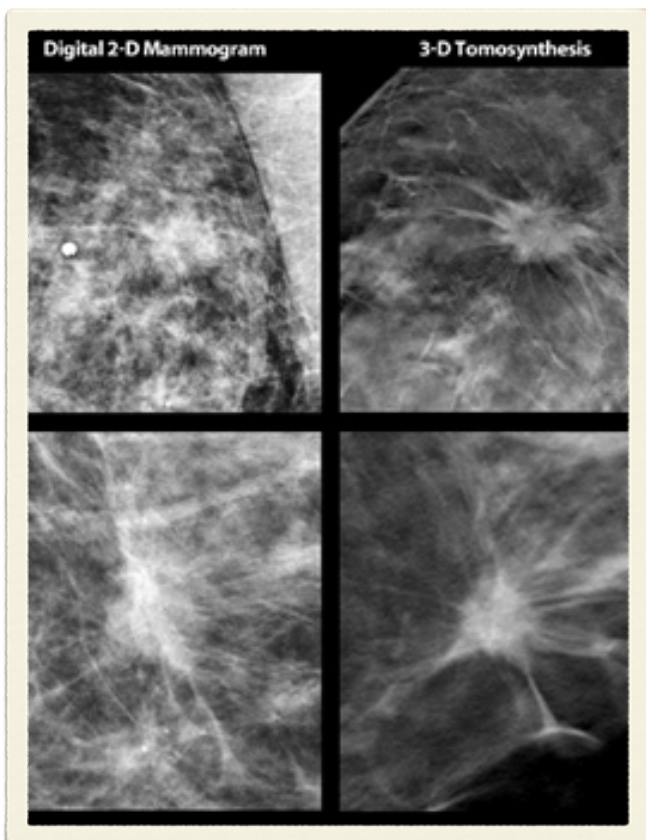
an arc of 25 degrees, in any mammographic projectional plane.

These images are able to be reconstructed into a 2D synthesised view, and also 1cm and 0.5mm slices through the breast.

This is achieved with the same dose as the comparable 2D Full Field Digital Mammography (FFDM) view, and studies have shown that although the breast compression is longer by seven seconds, the womens' experience is equivocal to 2D FFDM.

So far almost 70 BSWA women have experienced DBT at either SCGH or RPH Breast Centres with the primary focus on areas of Localised Increased Stroma and Stromal Distortions with a view to improve our assessment efficiency to our BSWA clientele.

*Natalie Webb & Carolyn Madeley  
SMIT SCGH/RPH Breast Centres*



## Welcome Jan Pickering

### Coordinator Support Services



I am looking forward to an exciting career in BSWA and working with the team on a number of new initiatives.

I have always believed that health is an incredibly important area to work in and I am very keen to learn more about how BSWA works with the women of WA to ensure they feel comforted in the fact

we are doing what we can for them.

I love working and being with people and have a strong customer focus. Away from work I enjoy travelling with my husband and have recently returned from a Scenic Cruise in Europe.

I have two adult children and one "Fur Grandchild" a Labrador X Border Collie called Max.

In the winter months we spend our weekends cheering on the Freo Dockers.

## Bunbury Clinic signage



The Bunbury Clinic has new signage installed at the front of the building. We are delighted that BreastScreen's Assessment and Screening Clinic will now be easy to find for our clients.

## COMING UP....

- 4 FEB** Official online booking launch at Perth City Clinic
- FEB** Launch of BSWA Facebook page
- FEB** BreastScreen WA optional uniform - order forms will be emailed out early February
- NOV** Advance notice 7<sup>th</sup> Multidisciplinary Breast Cancer Conference - Realising the benefits of digital breast imaging 8-9 November 2014, Perth