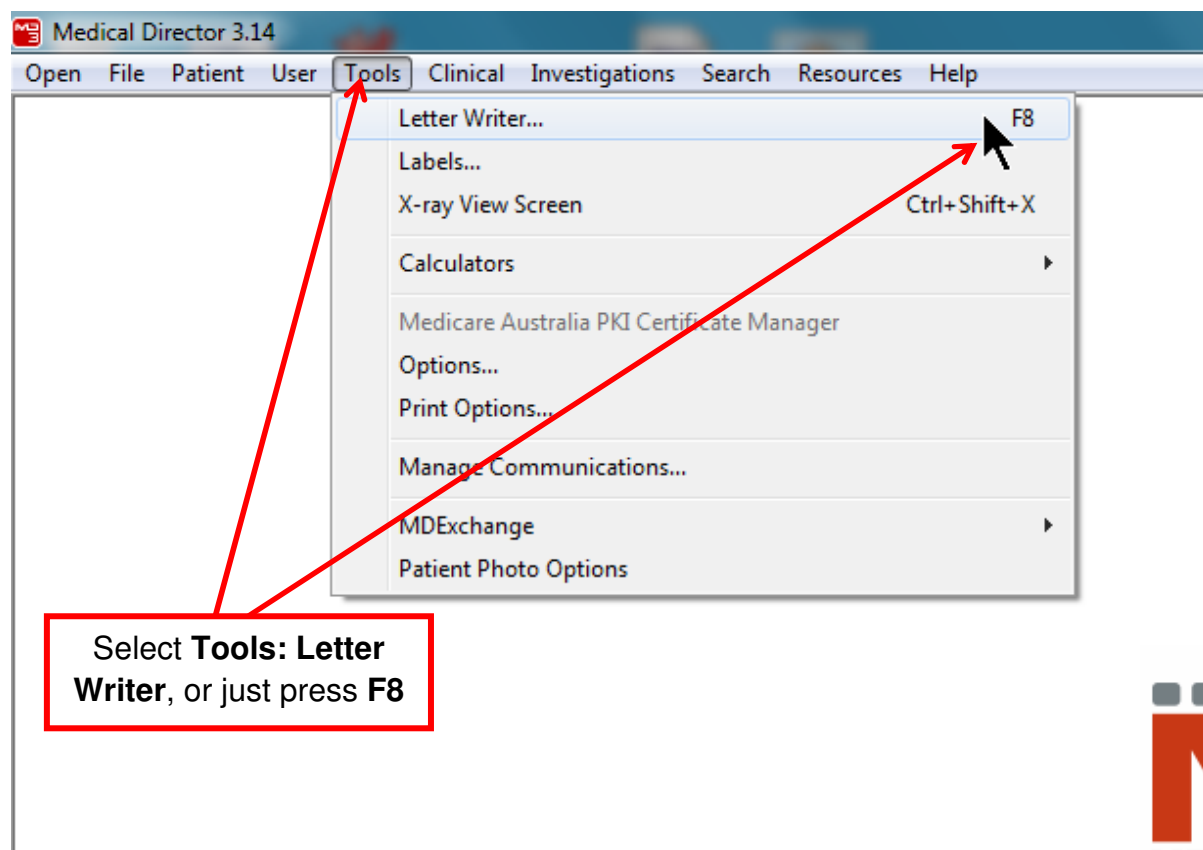
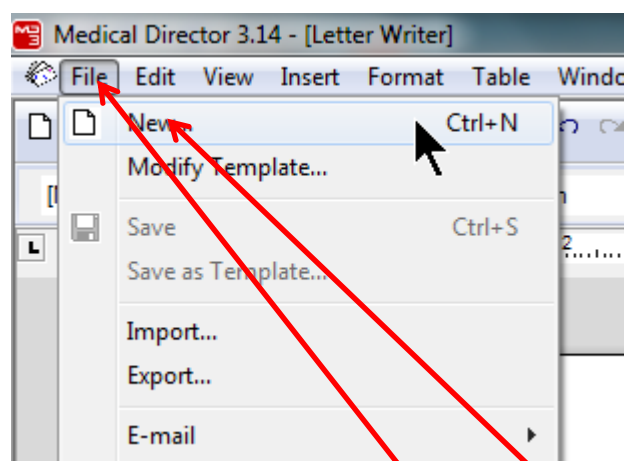


How To Import Templates Into Medical Director Software

Open Medical Director

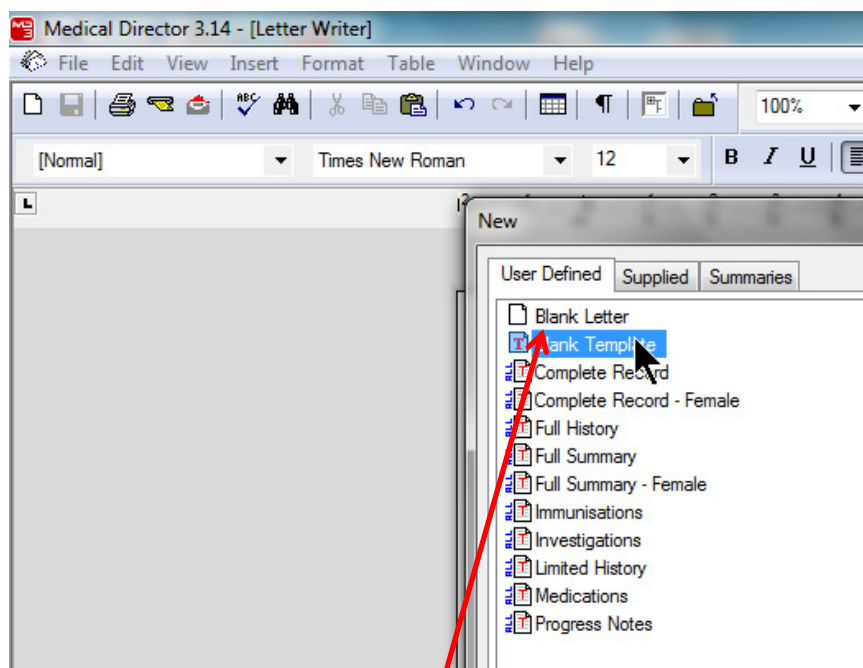


Create a new template



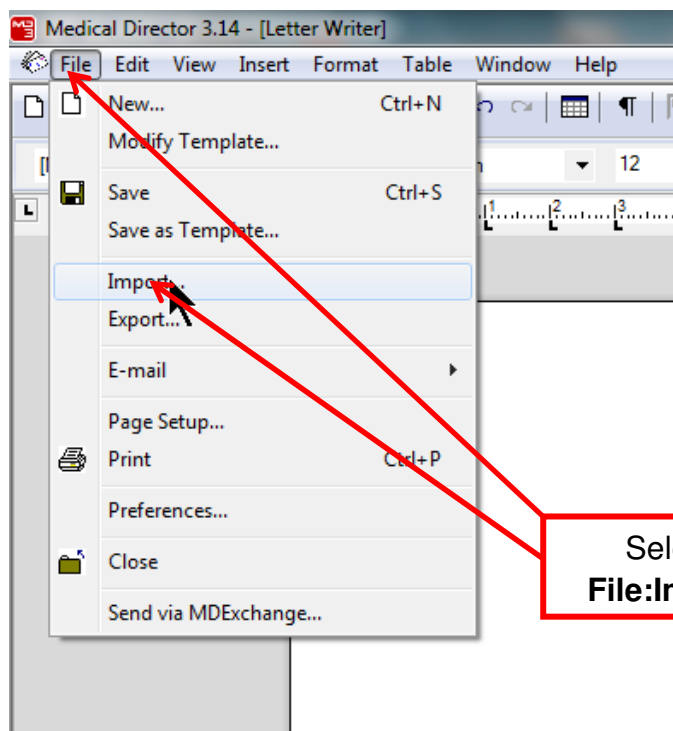
Select **File:New** or just **Ctrl+N**

How To Import Templates Into Medical Director Software



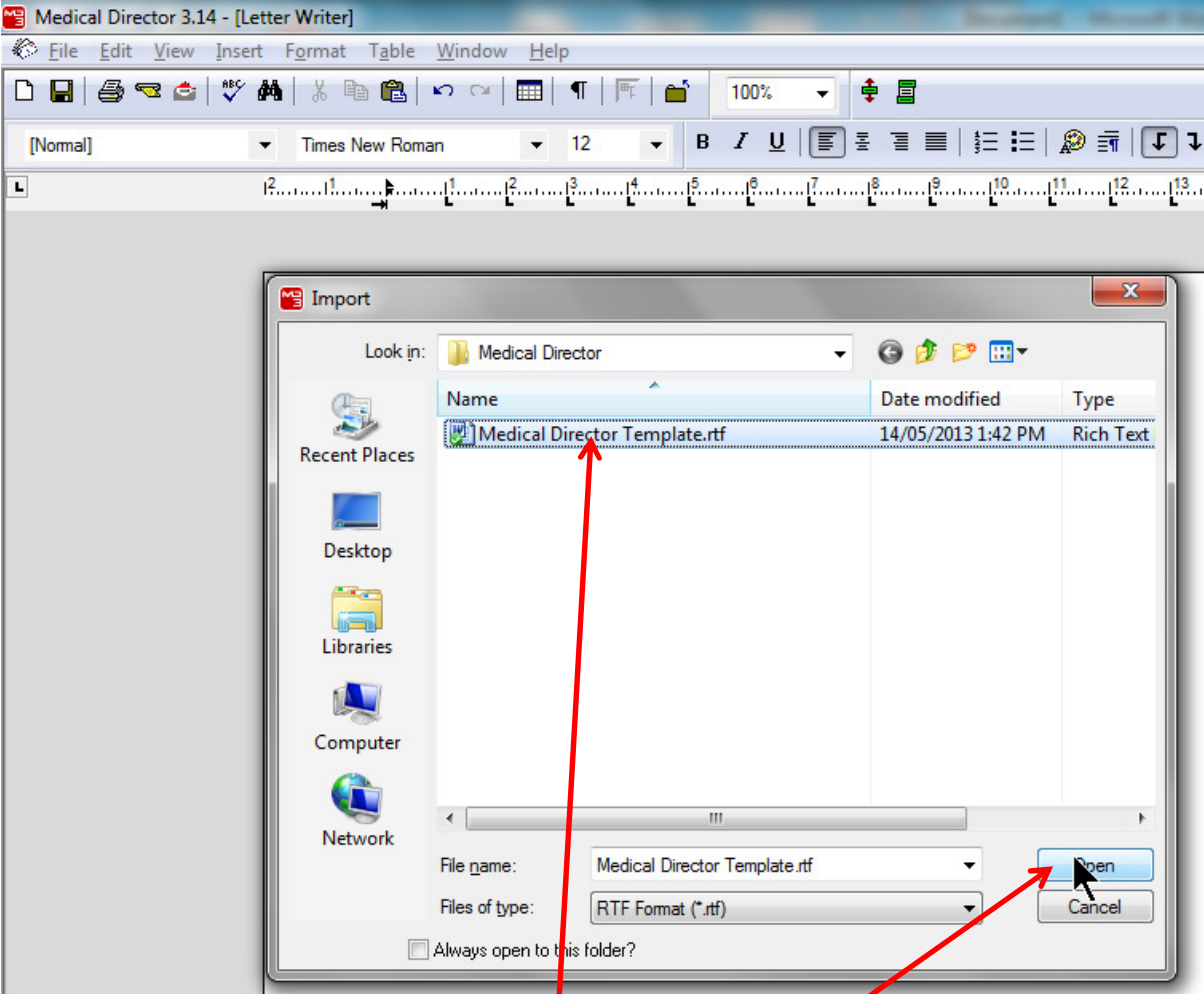
Select **Blank Template**

Import the Template



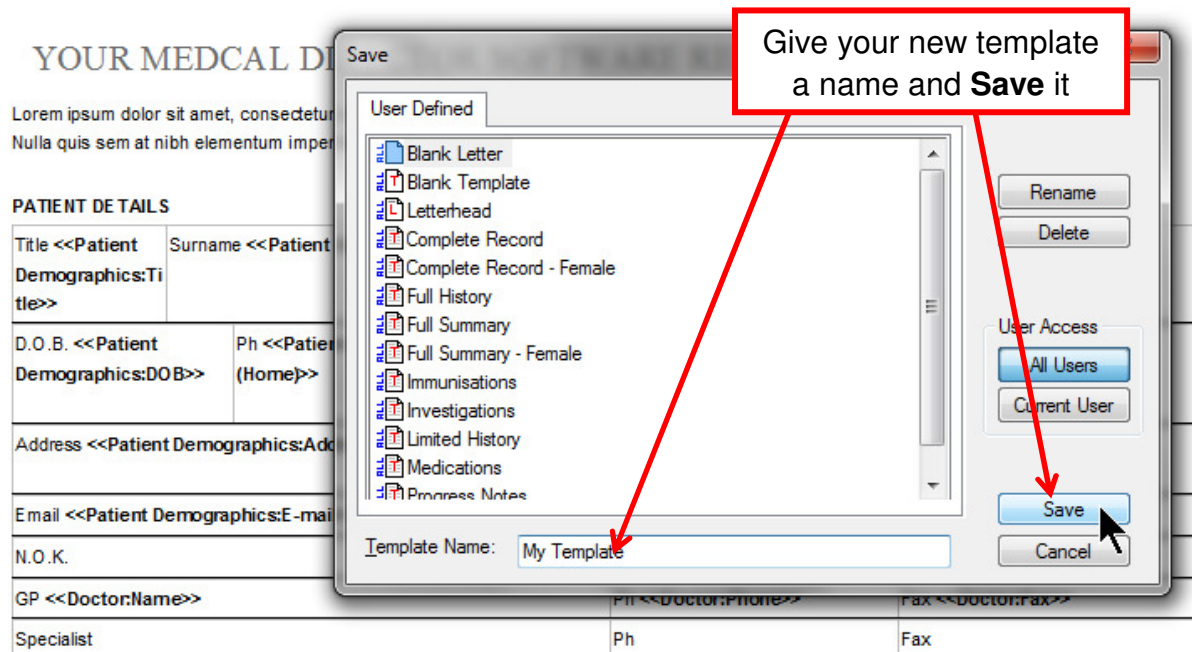
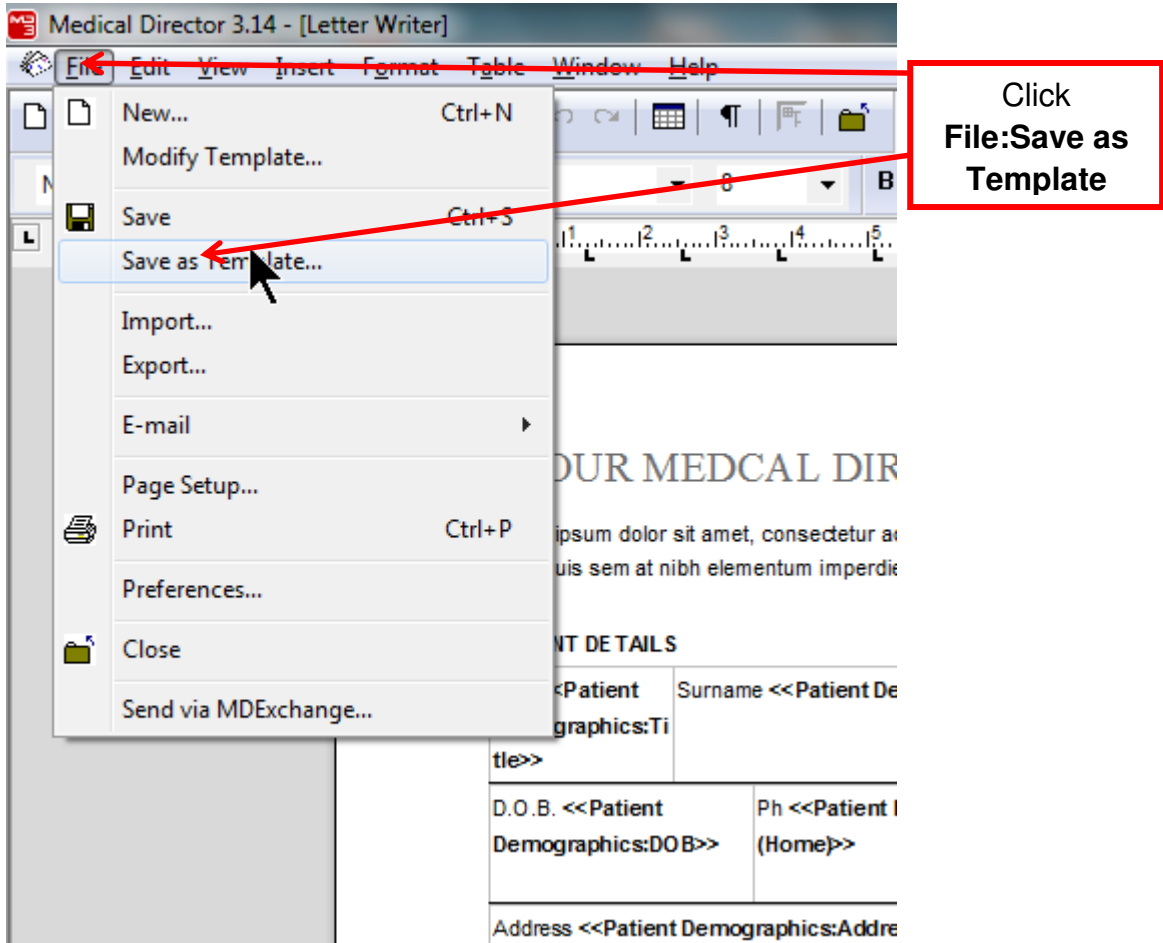
Select **File:Import**

How To Import Templates Into Medical Director Software



Navigate to the template you wish to import and click **Open**

How To Import Templates Into Medical Director Software



Your new template is now ready for use